

Fitting your Window Pleated Screen, face fit – Kit PL6**

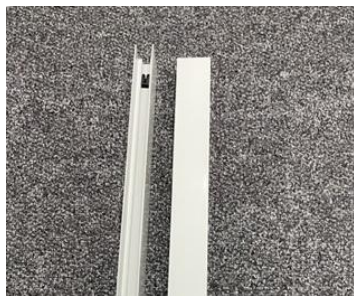
Thanks for choosing our screen system.

We double check all orders before despatch, but we would ask you to check that all the components have been received as listed below. If any items are missing please call us on 01628 481919

If you are unsure at any stage please contact us. We are always happy to help.

Contents

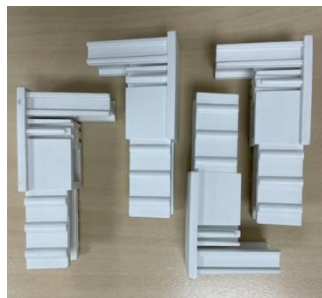
Side channels both containing a V shape black cursor



Top and bottom frame channels



Corners for the frame assembly



Silver Closing Carrier with magnetic strip insert



Mesh with handle bar attached



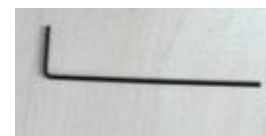
Framework fixing screws



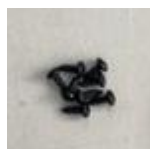
Cover caps for screw holes



Allen Key



Black tensioner screws



Opening / closing rod



Tools required

- Tape measure & pencil
- Mallet or hammer
- Spirit level
- Power drill
- 3 ½ mm drill bit – suitable for drilling aluminium
- 8mm drill bit – suitable for drilling aluminium
- Posidrive 2 bit
- Allen key 2.5mm (**provided**)
- Pair of scissors

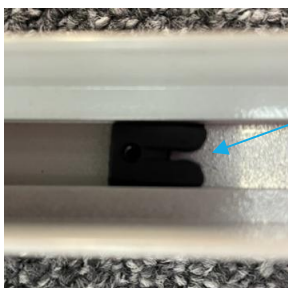
Overview

Your screen system consists of 1 window pleated mesh screen within a surrounding framework which face fits to the window frame. The pleated mesh screen pulls down over the window opening and closes into a magnetic strip at the bottom

The screen must be fitted square to ensure it functions correctly. Check at intervals using a spirit level

Step 1 – Drill and assemble the outer frame.

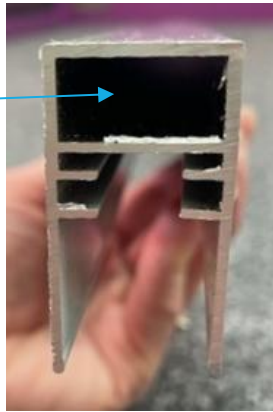
- Identify the side channels by finding the lengths that contain the black cursors. The V of the cursor must face the bottom of the screen. Bear this in mind when you drill the holes on the front face of the framework.



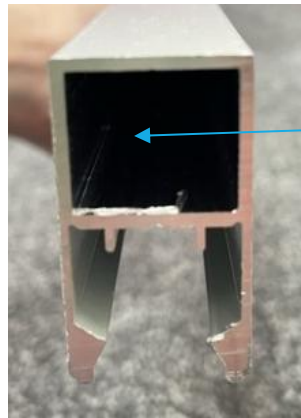
V must face the
bottom of the screen

- All 4 lengths of the framework have a chamber running around the edge of the framework to allow you to drill through it without damaging the workings of the screen. See images below.

Side channels. Drill holes through this chamber



Top and bottom channels drill holes through this chamber



- At approx. 100mm in from either end, of all 4 lengths, drill all the way through the 40mm face of the profiles, front to back using a 3 1/2mm drill bit.
- Now increase the size of the hole on the front face only by using an 8mm drill bit. At this point make sure your top and bottom channels are the correct way around for the larger holes to be facing outwards and the V's in the side channels are facing the right direction.
- Take the top and bottom channels and 2 side channels and assemble the framework of the screen by using the 4 corners provided. Ensure all of your enlarged holes are on the same face. The corners will be a snug fit and you will require a mallet or hammer to tap them into place.

Top



Bottom



Step 2 – Fit the outer frame.

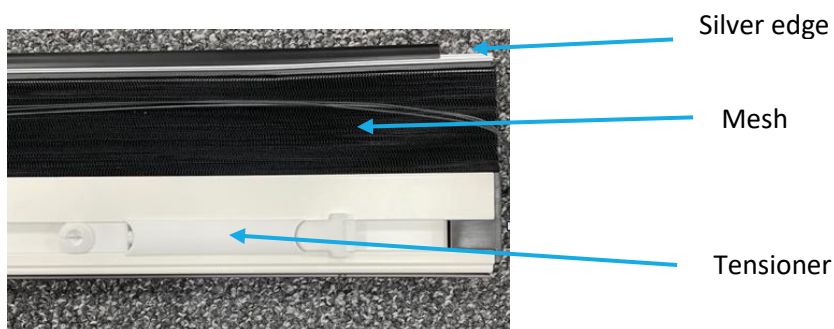
Offer the assembled framework up to your window frame and position for fitting. Once you are happy with the position of the frame, screw it into place.

Tip: You can use some double-sided bonding tape to the back of the framework to hold it in position whilst fixing into place. Especially useful if you are fitting a large screen.



Step 3 – Fitting the Mesh

- Take the cling film off the mesh and remove the cardboard from around the strings.
- Ensure the strings are exiting the unit without being caught in the end cap at either side.
- There are tensioners both sides of the handle bar, see image below. These are positioned at the bottom of the mesh and should face you as you fit the screen.



- The silver edge of the mesh fits into the top channel. Position the mesh with the silver part facing the top channel. Angle the mesh into the side channels and push it up against the top channel ensuring the strings are not caught up in the process.
- Once against the top channel, starting from one side, gently pull the mesh away from the silver metal element and push the unit into the top channel. As you move across the mesh you will start to hear it clip into position

Step 4 – Fitting the strings

- Check that the strings are running freely on both sides of the mesh by holding each of the group of strings in turn in one hand and pull the handle bar slightly downwards. The strings will move if they are free. Push the

mesh back up to the top. If the mesh does not move freely you can ease the handle bar out of the channels to check the 'end plugs' and make sure the strings are not trapped.

- Take the knot on the string from one side of the mesh and hook it into the V of the black adjuster. The strings should feel under tension.
- If not under tension loosen the adjuster using the allen key provided, slide in the required direction and re-tighten
- This process can be a little fiddly and it may help to have a second pair of hands with a torch to shine into the channel or, if you have one, use a head torch.
- Repeat the process for the other side.
- Leave the strings long at this point.



Step 5 – Fitting the magnetic closing carrier

- The magnetic strip is longer than the width of your screen. With the silver edge facing the bottom channel angle the strip in between the side channels. Check the polarity of the magnetic strip by holding the dark grey side up against the magnetic strip of the handle bar. If there is no magnetic 'pull' angle the strip out of the channels, turn it around and replace it.
- With the polarity now established, just as you did with the mesh, begin at the 1 side and start to push the strip into the bottom channel. As you move across you will start to hear it clip into place.

Step 6 -Testing your screen

- Pull the handle bar on the mesh down to the bottom to check it runs smoothly and meets with the magnetic strip. If this is not the case the strings may need some adjustment. We would suggest making an adjustment to the 1 side at a time and then test to see if that corrects the issue. If not, you may need to make further adjustment to the same side or, to the opposing side. Make incremental adjustments until the issue is fixed.
- To adjust use the allen key to loosen the black adjuster and slide it along the channel.

Step 7 - Finishing touches!

Once you are happy that the screen is running smoothly and meeting the magnetic strip at the bottom you can complete the finishing touches to the screen.

- Cut both groups of strings beyond the knot using a pair of scissors leaving them long enough that they are just hidden by the channels.
- Cover the holes in the outer framework with the cover caps provided.
- Push the tensioners on the handle bar outwards so that each glider sits on the respective side channel. Screw the black tensioner screws into the hole on the inner side to hold them in place.

Step 8 – Attaching the opening / closing rod

- The handle bar is recessed to provide you with a handle to open and close the screen, but if your window is particularly high, or awkward to reach, the rod may assist you with this process. If you decide to use it simply clip into the recess on the handle bar. Angle the rounded edge into the recess at the bottom and then clip the 2 little feet into place at the top by pushing firmly against the handle bar. See image below.



Step 9 – Additional information

- The mesh can be brushed or hoovered using the round furniture attachment. It is recommended that you gather the mesh together slightly whilst doing this.

YOUR INSTALLATION IS COMPLETE